



ANDERSEN  
STERILIZERS

## EOGas 3 Installation Guidelines

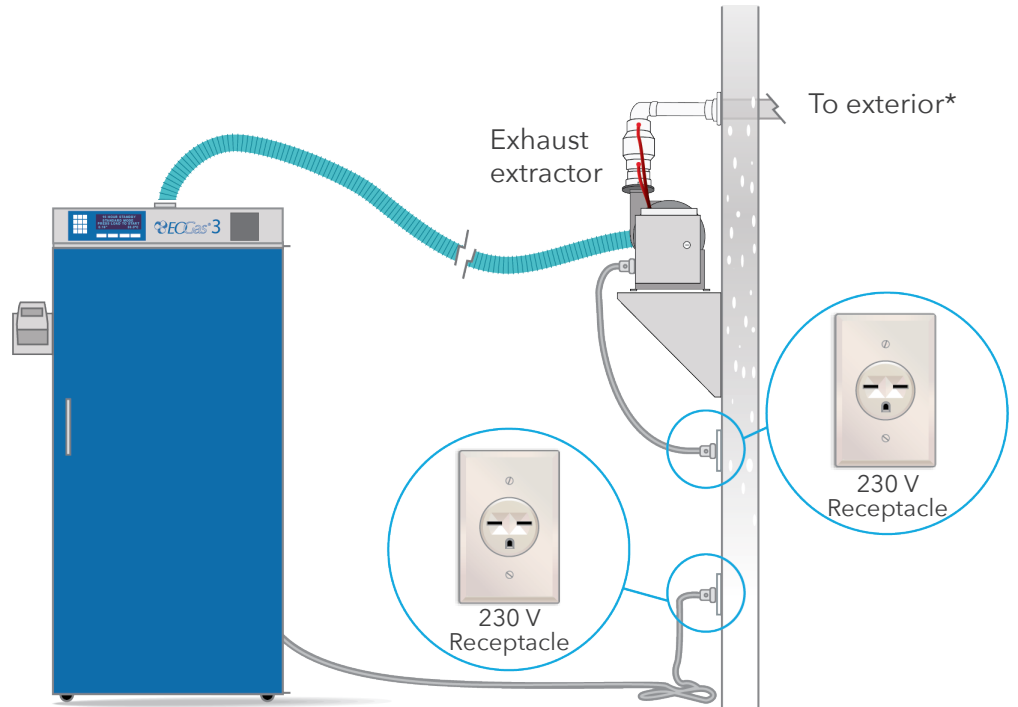
EOGas 3 Sterilizer installation options

### Recommended Installation

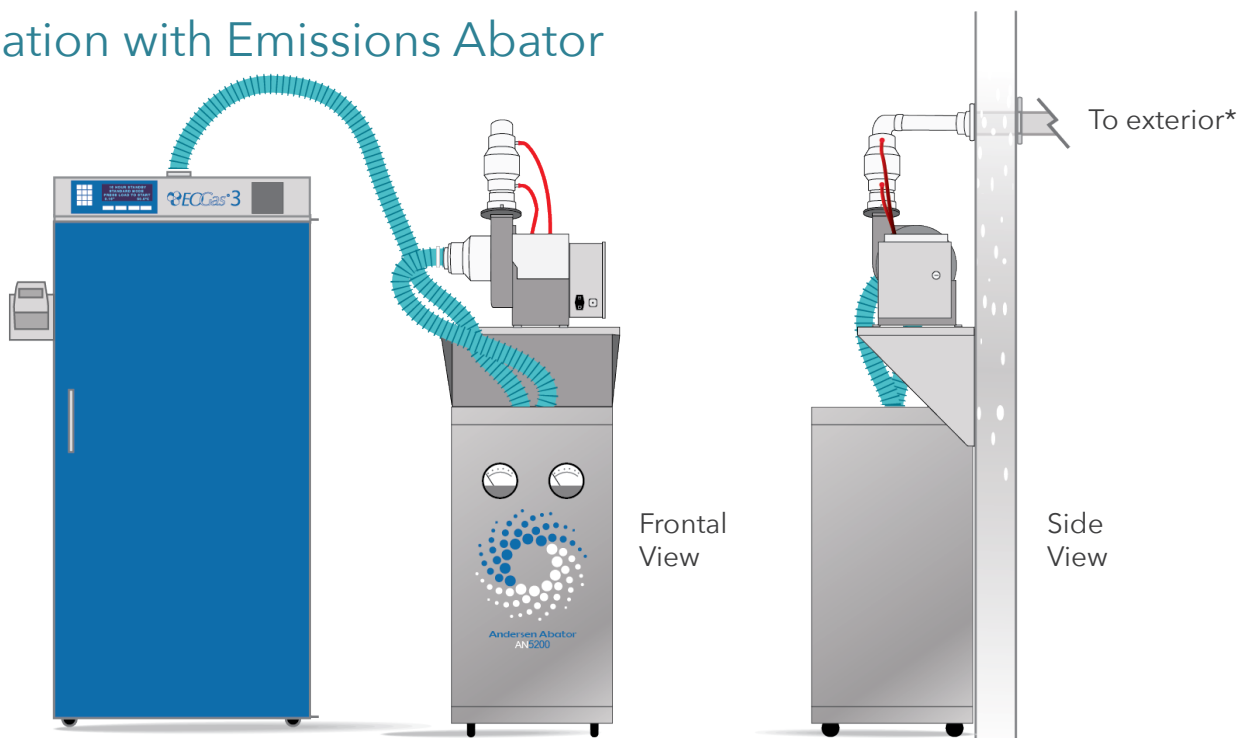
Whenever possible, EOGas Sterilizers should be located near an outside wall, and exhaust directly to the outside via the included exhaust extractor. Both the AN333 and AN310 are equipped with levelers for permanent placement and equipment leveling. The AN333 is also equipped with casters for ease of equipment movement prior to setting the levelers at permanent location of equipment.

#### Power Requirements:

Two 230V electrical outlets needed.  
One for the sterilizer and one for the extractor.

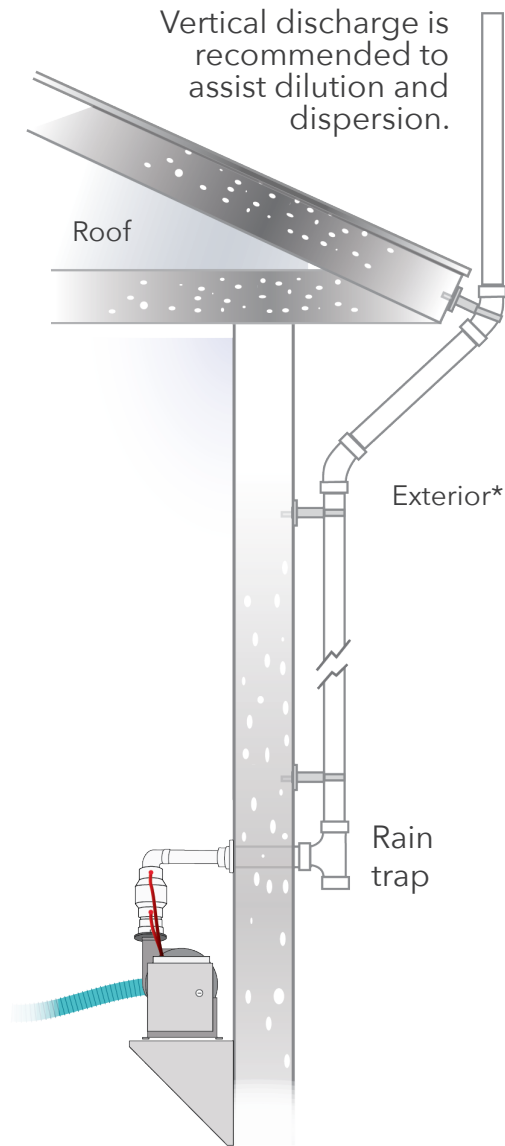


### Installation with Emissions Abator



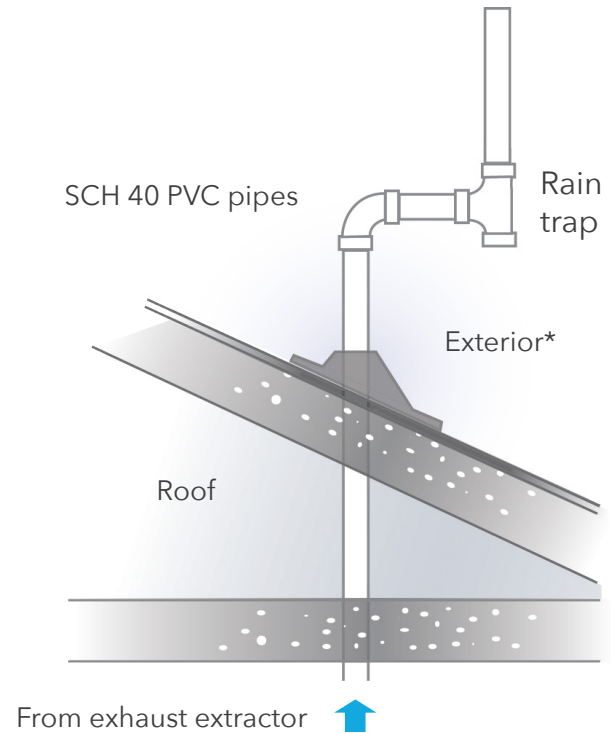
3 Inch PVC or larger is recommended. All efforts should be made to prevent water intrusion or foreign objects from entering exhaust.

## Recommended Configuration



## Alternate Option 2

Roof installation with vent boot



**\*Please note:** ANSI/AAMI ST41 guidelines recommend all EO sterilizers be vented (exhausted) through a dedicated exhaust line to the outside atmosphere directly or through an emission control system. The vent should not terminate within 25 feet (7.6m) of any building air intake source or near pedestrian or animal traffic, nor should it allow EO release into or to reenter the building.

For further installation assistance please call your Andersen representative or 1.800.523.1276